



CARGO CART WITH OVERHANG

Successful Makerspaces and STEM Labs require access to a broad range of materials and resources to foster learning through inquiry. The Explorer Cargo Cart with Overhang by Haskell Education is the perfect support solution to our Rover Table and our Maker Table allowing easy access to all the many different maker manipulatives needed. Its ease of mobility allows for easy access to any area of the classroom where maker activities happen or it can follow its companion the Rover Table from room to room.

Learn. Think. Do.™

Furniture solutions for flexible and agile learning environments that encourage individual choice, increased movement and dynamic student engagement.



MAKE YOUR OWN CARGO CART

The universal frame design allows the Cargo Cart with Overhang to be configured with multiple storage configurations depending on the curriculum needs. The Cargo Cart with Overhang can accommodate many different types of materials from craft paper, makers, crayons, modeling clay, Legos to more complex items like 3D printing spools, poster boards, and large pieces of wood. Our standard butcher block top adds to the durability of this cart and comes with a 6" overhang on one side of the cart.

UNLIMITED STORAGE OPTIONS

The Cargo Cart with Overhang frame is designed to accommodate multiple storage options. There are 7 different all metal storage modules that can be specified individually or in combination to create your own unique storage solution. Most of the modules can be accessed from both sides of the cart making the configuration process simple and easy. In addition to bin storage, tool storage and peg board storage, two sizes of shelving can be specified as either open or with locking doors. The tool storage module comes with a peg board wall on the back side.



Bin Storage Module



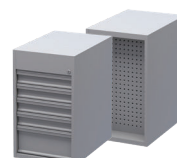
Double Storage Module with Locking Doors



Double Storage Module



Peg Board Module



Tool Storage Module



Single Storage Module



Single Storage Module with Locking Doors



DURABILITY AND MOBILITY

The Cargo Cart with Overhang is constructed with an all metal welded frame for a life time of use, a hallmark of Haskell Education design and construction. With its durable locking casters and standard butcher block top, the Cargo Cart with Overhang is perfect for active learning environments that require flexibility for multiple types of maker experiences. As part of the Explorer suite of solutions, the Cargo Cart with Overhang easily supports dedicated and mobile makerspace environments and works seamlessly in any of today's collaborative learning spaces.

FRAME FINISHES

Green Apple

Navy

Platinum

OVERALL DIMENSIONS
- 77.5" X 28" X 35.5"

WARRANTY
- Haskell Education Limited Lifetime Warranty
* see full warranty for terms and conditions

SCAN TO
LEARN MORE



haskelledge.com/cargo-cart-with-overhang/

©2023 Haskell Education. All Rights Reserved. Haskell Office®, Rover®, Explorer Series®, Learn Think Do®, Voyager®, and Tesla Table®, Assemble, Ethos, Captiva, Disco, Echo, Fuzion, Smart, Market, Marathon, and 360 are trademarks of Haskell Office, LLC.

